



# HOME ELEVATOR

The pinnacle of  
*German Engineering & Italian Design*



engineering. tomorrow. together.



## German Engineering

from a world-class elevator company with designs that will blow your mind.

Transform the vision that everyone has for their own home into reality.

Experience the freedom of accessibility at its best.



Experience the best of German Engineering & Italian Design with an extensive range of sophisticated, elegant and stylish options. Discover the perfect combination of colors, materials and options to ensure a perfect fit for your home.

From our world-class elevator technology we have developed the best possible solution for a home lift which offers numerous configurations and a range of platform sizes for almost every requirement.

Altura utilizes the best-available home lift technology, offering a solution which is extremely energy efficient and is quieter than a silent room. Combine this with our thorough approach to Engineering and our love for Italian Design and you will find a solution which is environmental friendly, unobtrusive and will integrate beautifully with your home. As for all of our home lifts, safety and comfort are the pillars of our design and they are delivered from our German heritage.



"The Altura is thyssenkrupp's most versatile homelift"

Yours sincerely,

A handwritten signature in black ink, likely of Dirk Marschall.

Dirk Marschall, CEO



# Pinnacle of Home Opulence

Altura incorporates innovative patented cog belt technology. The gearless drive system can offer unbelievable comfort and performance.

A truly global Home lift for superior performance, with speed up to 0.4 m/s depending on local codes and Standards relevant to the market.

Excellent materials and finishes, you can Trust our designers choice for stylish combinations or feel free to design your own. Altura can be customized in every detail and dimensions perfectly matching your home decor.





# Performance With Style

Through our expertise in engineering, we have developed a high-quality gearless home lift.

The result is a high-performance addition to your home that you hardly hear even when you put your ear right next to it. Add to it our beautiful cabin styles and options, and you've got the perfect home lift.

## Comfort

We believe traveling between floors in your home shouldn't be a difficult or an uncomfortable experience.

Taking advantage of the gearless technology found in the Altura enables us to deliver a smooth and a quiet journey from start to finish. In addition, all of thyssenkrupp's home lifts come fitted with its extragentle soft-start/stop technology.

Each lift is fitted with a handrail and push to run buttons making the journey as seamless and safe as possible.

## Safety is in our DNA

The Altura home lift boasts an extensive list of safety features; As standard it carries a SIL3 certified safety system making it the first in the home lift market.

Unlike some home lifts, we have a separate safety system, away from the OSG, which means it will not be affected by mechanical faults. Unlike some homelifts our OSG system is separated from the main drive.



## Your safety is our priority

In case of a power failure, it will continue to work from a battery, allowing the user to reach the ground floor safely. It is also possible to connect fire alarm systems to the main electronic board.

# ALTURA

WITH SHAFT



This option comes with its own patented metal structure, does not require any side walls or even any supporting structure.

This option is ideal in case of an existing structure already constructed with Concrete/ Brick or Local metal fabrication.



# ALTURA

WITHOUT SHAFT





## H300 Specification

Superior Performance with style.

Incorporates innovative Gearless Cogbelt technology.

Luxurious with an Unbelievable smooth and silent ride.



Technical compliance	Machine Directive 2006/42/EC EN81-41/SIL 3
----------------------	--

Drive system	Gearless with cogbelt drive
--------------	-----------------------------

Rated speed	0.15 m/s up to 0.4 m/s
-------------	------------------------

Rated load	Up to 400 kg
------------	--------------

Travel height	Up to 18,000 mm
---------------	-----------------

Number of stops	Max. 6 stops per lift
-----------------	-----------------------

Number of doors	Max. 12 doors per lift
-----------------	------------------------

Pit	140 mm (no pit is required in case of threshold/ramp)
-----	---

Shaft top height	2500 mm in existing shaft / 2600 mm with its own shaft
------------------	--

Platform control	Automatic (one-touch) with call reservation
------------------	---

Environment	Indoor / Outdoor
-------------	------------------

Emergency lowering	Battery operated emergency lowering
--------------------	-------------------------------------

Control voltage	24V
-----------------	-----

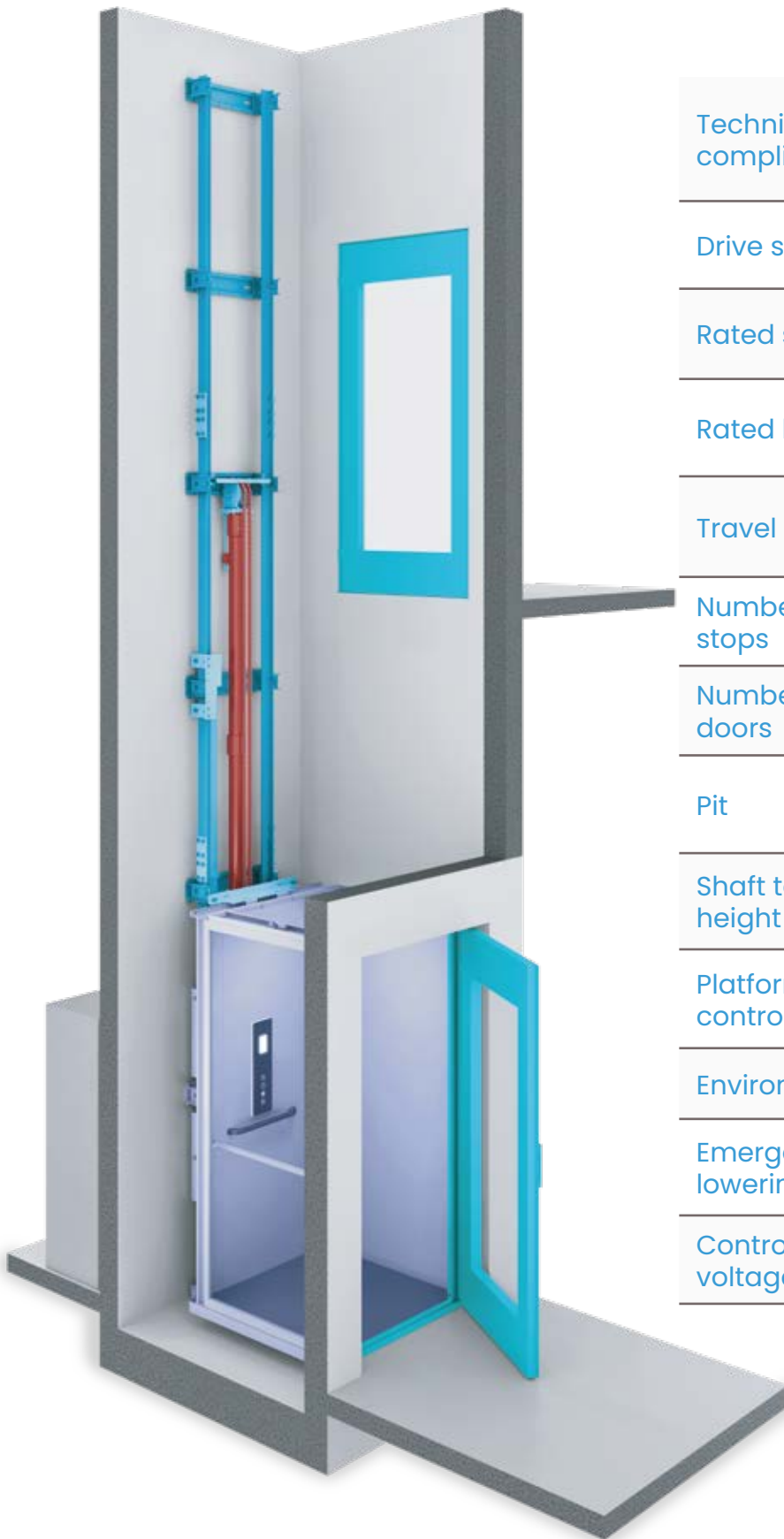






## H200 Specification

# The H200 Incorporates Proven and Reliable Hydraulic Technology and Offers Comfort and Performance



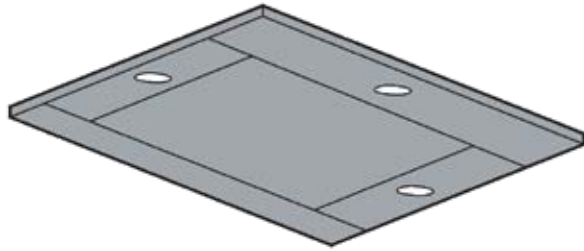
Technical compliance	European Machine directive 2006/42/EC Reference standard: EN 81-41/SIL 3
Drive system	Hydraulic control unit with indirect action by chains
Rated speed	0.15 m/s up to 0.3 m/s
Rated load	Up to 400 kg
Travel height	Up to 14,900 mm
Number of stops	Max. 6 stops per lift
Number of doors	Max. 12 doors per lift
Pit	120 mm (no pit is required when there is a threshold/ramp)
Shaft top height	Standard 2300 mm depending on shaft type and landing doors.
Platform control	Automatic (one-touch) with call reservation
Environment	Indoor / Outdoor
Emergency lowering	Battery operated emergency lowering
Control voltage	24V





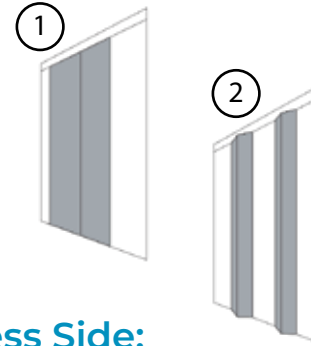


# Standard Cabin - Layout



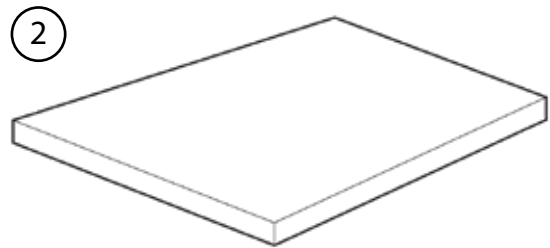
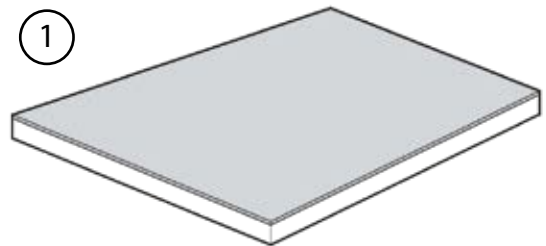
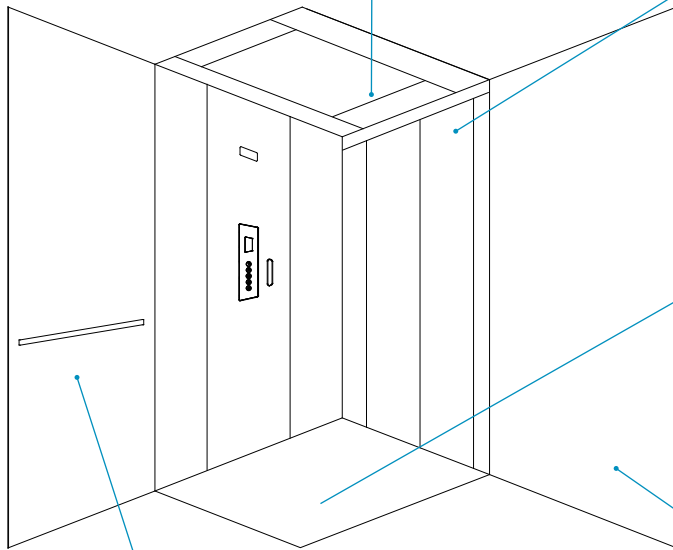
## Ceiling:

- Three LED spots
- Same finish as cabin walls



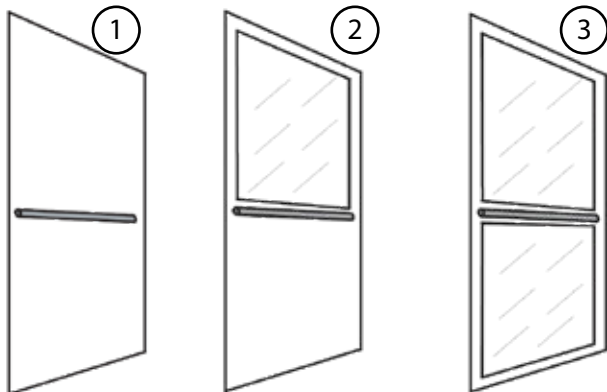
## Access Side:

- Folding door (1)
- Sliding door (2)
- Matching finish to cabin wall



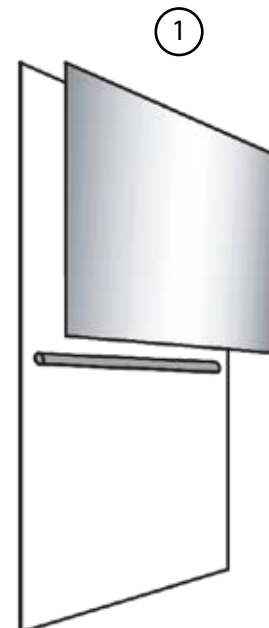
## Flooring:

- At choice from our catalogue (1)
- Supplied without vinyl (2)



## Cabin Wall:

- Blind Wall (1)    Half Panoramic (2)    Full Panoramic (3)
- Half and Full Panoramic in the same finish as blind wall
- Handrail not included - Mandatory on Full Panoramic for Public Access



## Mirror for cabin wall:



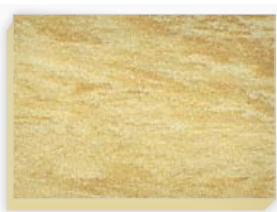
# Standard Cabin - Finishes

## Flooring *- FOR BOTH CABIN AND FULL PANEL WITH CEILING*

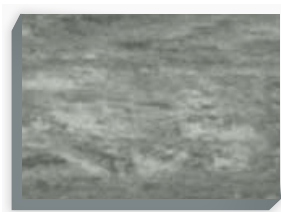
Choose between the following options for safety vinyl flooring with guaranteed life time non-slip.



White Vinyl



Sand Vinyl



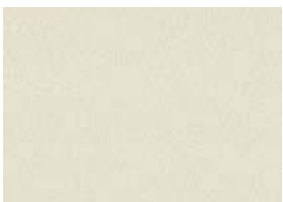
Grey Vinyl

Choose to have your lift delivered without flooring, if you want to apply your own.  
Max 3 mm flooring for flush top alignment.

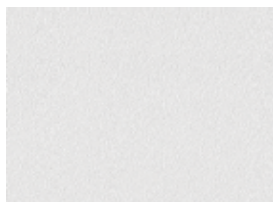
## Cabin Wall

RAL Colour suggested for painted parts to match with the pre-coated steel.

### PRE-COATED STEEL - PLAIN



A4 - RAL9010 (standard)



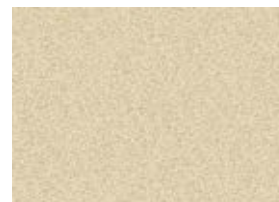
A1 - RAL9003



A13 - RAL1013



B13 - RAL5024



G1 - RAL1015

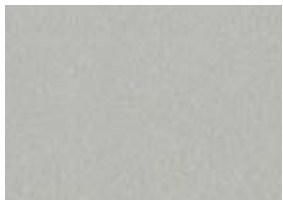


N1 - RAL7035

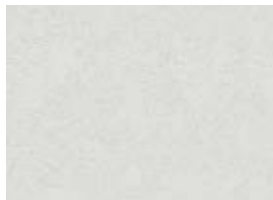


PPS - Metal Like - RAL7037

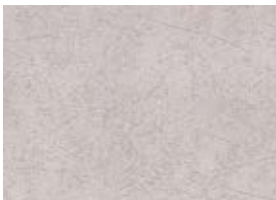
### PRE-COATED STEEL - PPS



PPS1 -RAL 7035



PPS10 - RAL 9003

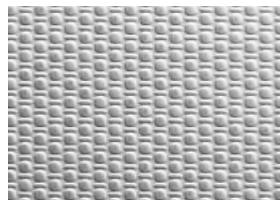


PPS11 - RAL 1013

### STAINLESS STEEL



Stainless Steel Satin



Stainless Steel Linen (Scratch resistant finish)

RAL PAINT OF CHOICE  
*- FOR BOTH CABIN AND FULL PANEL WITH CEILING*



Real colours and layout may differ from those shown. Slight noticeable differences are possible because of different materials. Contents subject to change without notice

# Basic cabin: Standard & Optional Upgrades

## CABIN INTERIOR - STANDARD

Wall – PPS Colours Standard

Celling – 3 LED Spot Lights

Hand Rail – Black on Side G

COP – Black with TFT Colour Display, Landing

Indicator and Voice Announcer

Telephone

Upto 900 mm – Finished in Skinplate

Floor – Vinyl / Prepared for Customer Own (3mm)

## CABIN INTERIOR - OPTIONS

Cabin Interior – Options

Wall – RAL Colour / SS Satin / SS Linen

Cabin External Wall Cladding in Natural

Aluminum Per Side

Cabin Roof Cladding in Natural Aluminum

(Except Hatch Area)

Half / Full Panoramic Wall

Half Mirror

Fold Down Seat – Plexiglass

Hand Rail – SS Satin on Side G, A, B, C

Ventilation Fan in Ceiling

i-Button in COP insted of Key switch

Autodialer / Autodialer + GSM

Fire Alarm System Integration – Compatibility

## OTHER - OPTIONS

Power Pack Extention Upto 10 meters

Customized plan Size out of Standards

Oil Heater for temperature <+5 Degree Celsius

LCD Landing Display

Landing Door Key – Includes School Locking Function

## CABIN SLIDING DOOR - STANDARD

Upto 900 mm – Finished in Skinplate

## SLIDING LANDING DOOR - STANDARD

Upto 900 mm – Finished in Skinplate

## SWING LANDING DOOR - STANDARD

Steel blind – Painted in RAL 9010

SS Door Handle – Techno

## CABIN SLIDING DOOR - OPTIONS

Blind – SS Satin, RAL, Special RAL

Panoramic – Finished in SS Satin

## SLIDING LANDING DOOR - OPTIONS

Blind – SS Satin , RAL , RAL Metallic

Panoramic – SS Satin , RAL , RAL Metallic

## SWING LANDING DOOR - OPTIONS

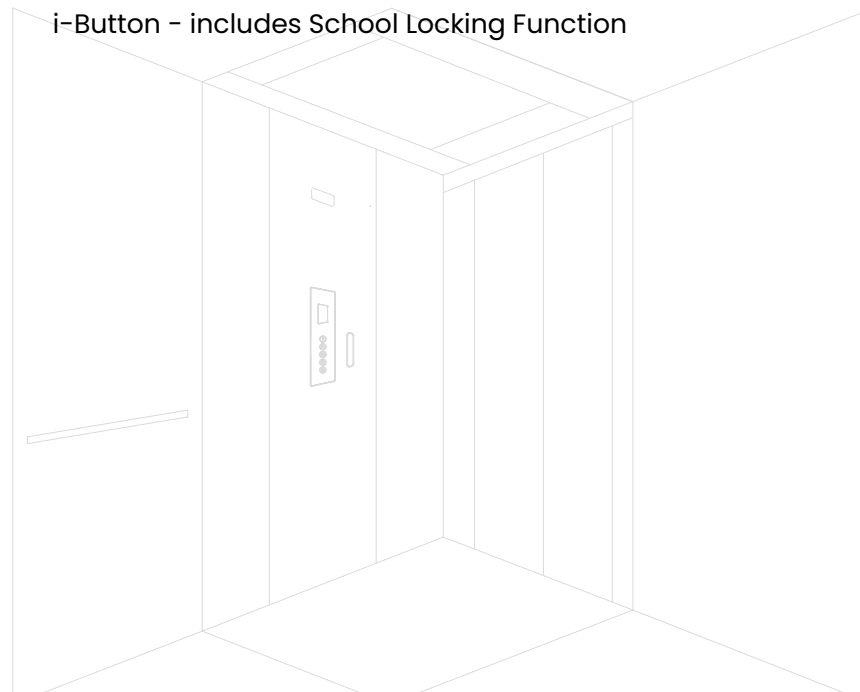
Panoramic Glass on Door (Smokey Grey, Opaline, Smokey Satin, Half Reflecting)

RAL STD Colour & Metallic

SS Door Handle – Modern

Automatic EVO Door Opener and Closer

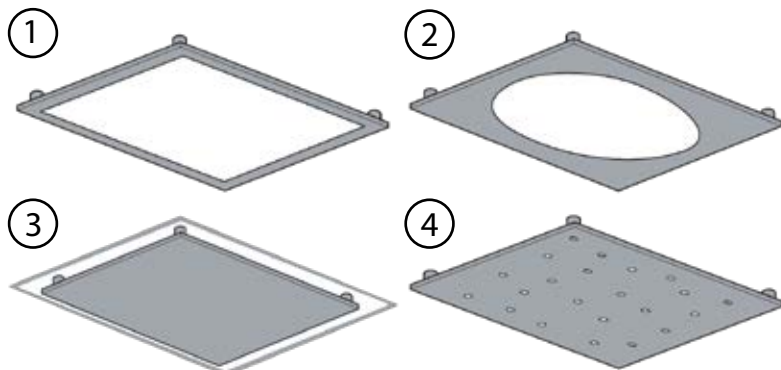
i-Button – includes School Locking Function





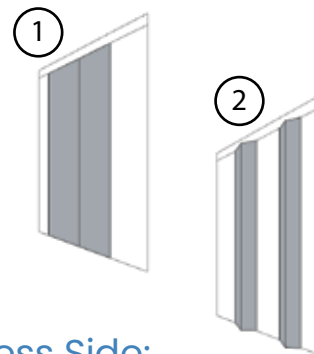


# Elegance Cabin - Layout



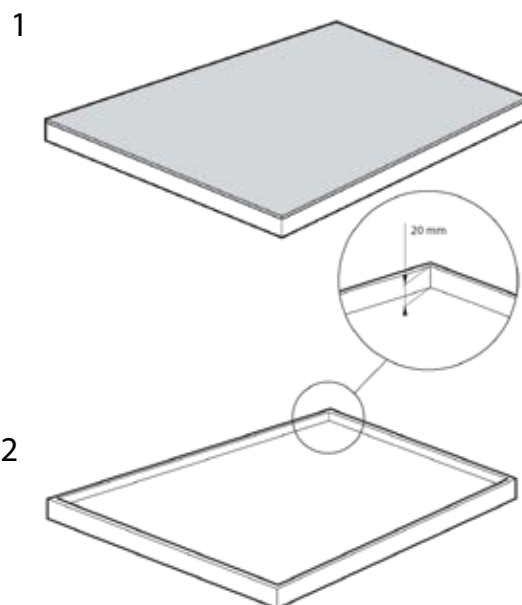
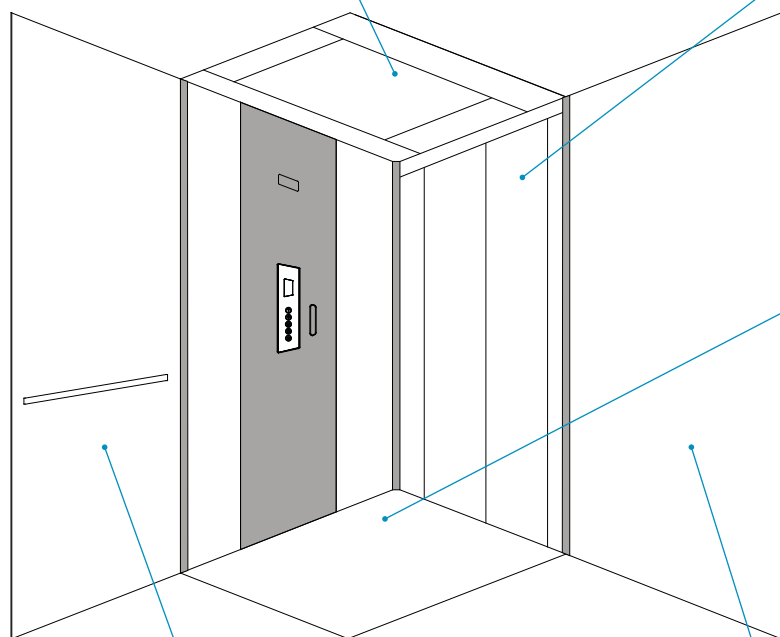
## Suspended ceiling:

- Opal (1)
- Round (2)
- Plain steel (3)
- Starry sky - Stainless Steel (4)



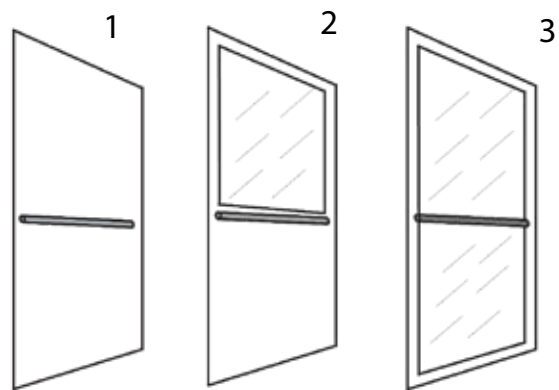
## Access Side:

- Folding door (1)
- Sliding door (2)
- Matching finish to cabin wall



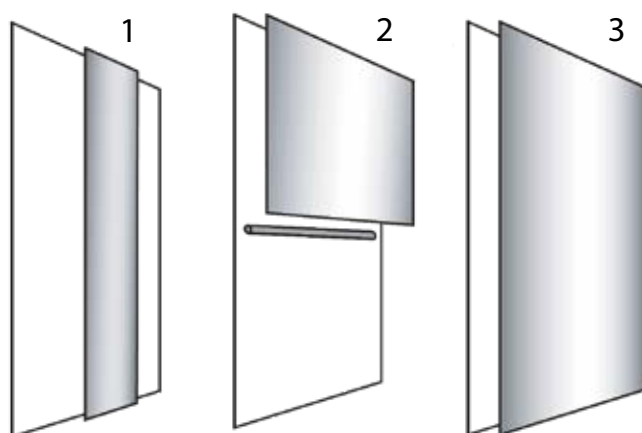
## Flooring:

- At choice from our catalogue (1)
- Prepared for Customer application (2)



## Cabin Wall:

Blind Wall (1) Half Panoramic (2) Full Panoramic (3) Half and Full Panoramic in the same finish as blind wall  
Handrail not included - Mandatory on Full Panoramic for Public Access solutions



## Mirror for cabin wall:

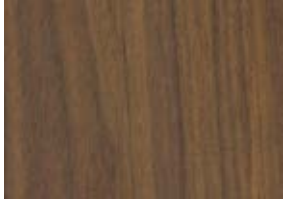
- Slat vertical - Fixed (1)
- Dimensions (1)
- Half wall (2)
- Full wall (3)



# Elegance Cabin - Finishes

## Cabin Wall

### LAMINATE - WOOD



Dark wood 4303



Bright wood 4367



Bright wood 4515



Bright wood 4533



Warm wood 4511

### LAMINATE - TEXTURE

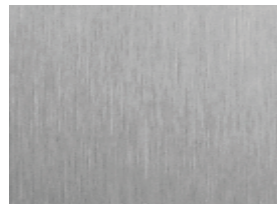


Tx 3318



Tx 4485

### STAINLESS STEEL



Stainless Steel Satin



Stainless Steel Mirror

### LAMINATE - CONCRETE



Cr 868



Cr 585

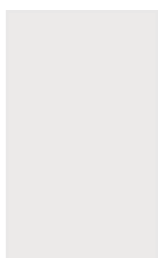


Cr 3331



Cr 546 (former Cr 1117)

### ACCENT - CORNERS AND CENTRAL PANEL



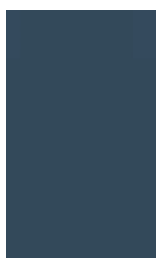
9003



7035



7012



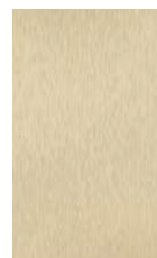
7021



Satin



Mirror



Gold



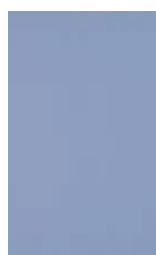
1019



3003



6011



5024

Real colours and layout may differ from those shown. Slight noticeable differences are possible because of different materials. Contents subject to change without notice.

# Elegance - Finishes

## Flooring

Choose between the following options for safety vinyl flooring with guaranteed lifetime non-slip.

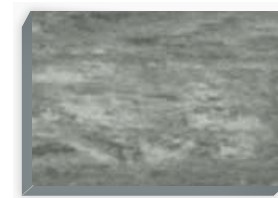
### VINYL



White



Sand



Grey

### STONES



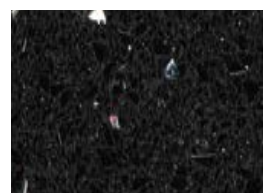
White



Sand



Grey

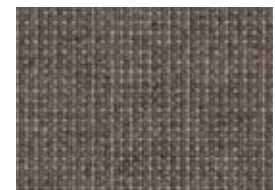


Black

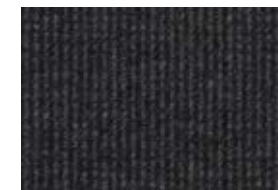
### CARPETS



White



Sand



Grey

## Ceiling

Elegance cabin is always provided with a counterceiling with LED light. Choose between the following options:

- ① Opal (standard)
- ② Plain
- ③ Round
- ④ Starry Sky



Starry sky is stainless steel satin. The other ceilings are in RAL9010 (white) painted steel. As option can be ordered in Stainless Steel Satin





# Elegance Cabin - Optional Upgrades

## CABIN INTERIOR - STANDARD

Centre Panel & Corners - RAL / SS Satin  
Cabin Walls - SS (Satin / Mirror) Wood laminates  
Ceiling - Opal with RAL 9010  
Floor - Vinyl (Black, White, Sand)  
COP - Black  
Autodialer  
1 No. SS Hand Rail

## ELEGANCE CABIN INTERIOR - OPTIONS

Centre Panel & Corners - RAL , SS (Mirror/ Gold)  
Ceiling - Round / Plain Steel (RAL 9010), Starry Sky  
Floor - Carpet, Stone, Own Flooring  
Full / Half Mirror Height & Slim Vertical  
Full / Half Panoramic Wall  
Handrail SS - Satin /Gold Satin  
COP - Mirror / Gold  
External Coating - SS Cabin Per Wall, Door & Roof  
Autodialer + GSM  
Integration with building Fire Alarm

## OTHER - OPTIONS

Power Pack Extention upto 10 meters  
Customized plan Size out of Standards  
Oil Heater for temperature < +5 Degree Celsius  
LCD Landing Display  
Landing Door Key - Includes School Locking Function  
i-Button - includes School Locking Function

## CABIN SLIDING DOOR - STANDARD

upto 900 mm - Finished in RAL  
upto 900 mm - Finished in SS Satin

## LANDING DOOR - STANDARD

Upto 900 mm - Finished in Skinplate  
SS Door Handle - Techno

## CABIN SLIDING DOOR - OPTIONS

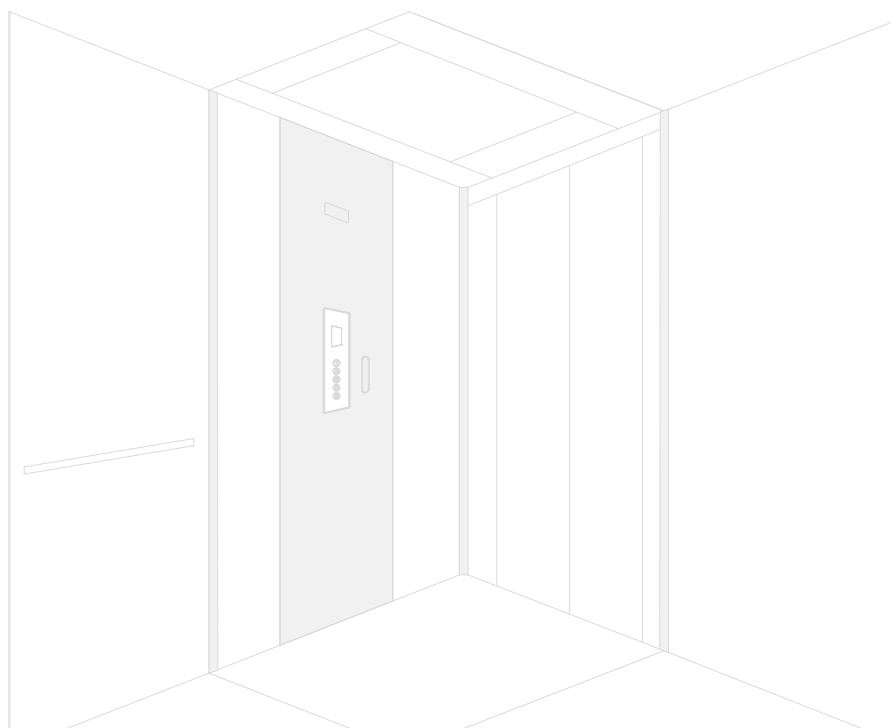
Panoramic - Finished in SS Satin

## SLIDING LANDING DOOR - OPTIONS

Finished in - SS Satin , RAL , RAL Metallic

## SWING LANDING DOOR - OPTIONS

Panoramic Glass on Door (Smokey Grey, Opaline, Smokey Satin, Half Reflecting)  
RAL STD Colour & Metallic  
SS Door Handle - Modern  
Automatic EVO Door Opener and Closer  
Steel Blind Covered in SS 441 Satin (Indoor)



# Shaft Structure

No rivets, no silicon weatherproof and suitable for seismic conditions(\*)

## H200 can be delivered with its own Patented metallic shaft.

The required headroom for the shaft structure (distance from top floor to top of shaft) depends on the type of top roof and landing doors. This includes a free height of 30mm between metal shaft roof and building for installation purpose. Elongation of the shaft is possible.

All the four sides will be cladded by the shaft panels in steel or glass, provided with a special gasket for water management. Also available essential panels to be mounted with silicon. It is highly recommended to use panels with gasket for outdoor installation. It is highly recommended to use steel panel on side G.

The lowest and the top panels on the guide side are always provided with a round axial aerator.

Typical Required Headroom with standard cabin.  
Please refer to "Feasibility information" section for further details

Model	Cabin without Doors	Cabin Folding Doors	Cabin Sliding Doors
H200 in concrete shaft	2300 mm	2320 mm	2450 mm / 2500 mm
H200 metal shaft header diagonals	2450 mm	2450 mm	2590 mm
H200 metal shaft flat roof - indoor	2470 mm	2470 mm	2610 mm
H200 metal shaft inclined roof outdoor	2490 mm	2490 mm	2630 mm

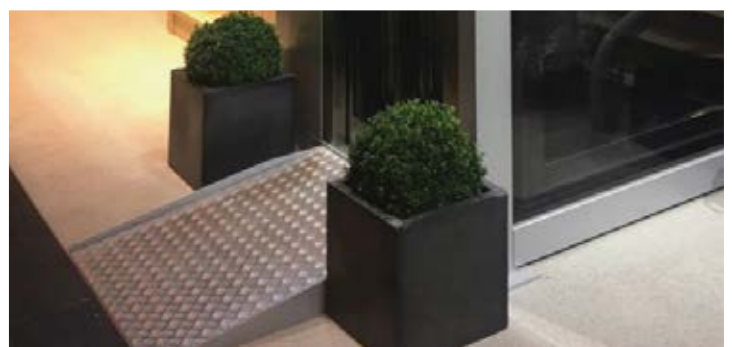
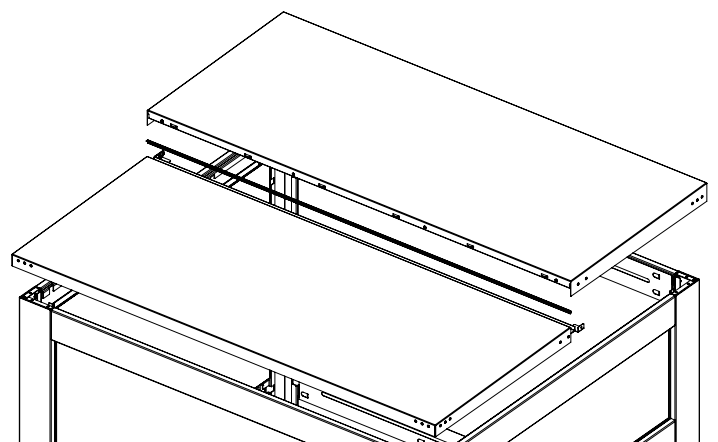
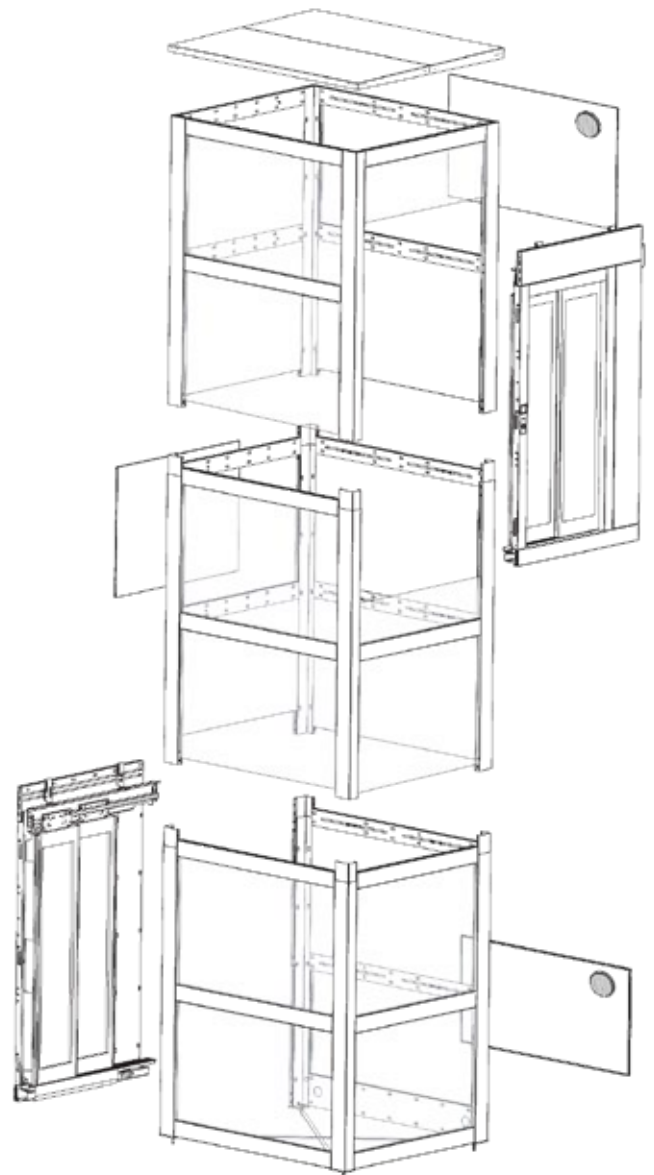
(\*) According to Eurocode, Seismic verification shall be checked with specific calculations and definition of fixing points for the specific unit.

## Shaft ceiling type

- Header diagonal
- Flat roof 1 or 2 pieces, depending on dimensions
- Inclined roof 1 or 2 pieces, depending on dimensions

## Ramp

If the lift is installed without a pit, a ramp is mandatory according to EN81-41. Please check compliance to local regulations. Usually a boardwalk with low incline is executed at the building site. Optionally we can provide a ramp 120 mm high and 1000 mm long, made of aluminium and prevents slipping.





# Elegance Cabin - Designer's choice



① Modern Europe

Wall: Bright Wood 4515  
 Accent: Black 7021  
 Ceiling: Round  
 Flooring: Grey Vinyl  
 Mirror: none  
 Handrail: S.Steel 2 pieces (for 1400 wide cabin only)



② Modern Americas

Wall: Concrete 3331  
 Accent: Blue 5024  
 Ceiling: Plain  
 Flooring: Grey Vinyl  
 Mirror: Slat vertical  
 Handrail: S.Steel 2 pieces (for 1400 wide cabin only)



③ Modern Asia

Wall: Texture 2606  
 Accent: Red 3003  
 Ceiling: Opal  
 Flooring: Grey Vinyl  
 Mirror: none  
 Handrail: S.Steel 2 pieces (for 1400 wide cabin only)



① Classic Europe

Wall: Cool Wood 4511  
 Accent: Beige 1019  
 Ceiling: Plain  
 Flooring: Sand Carpet  
 Mirror: Full Wall  
 Handrail: S.Steel 2 pieces (for 1400 wide cabin only)



② Classic Americas

Wall: Texture 3318  
 Accent: Light Grey 7035  
 Ceiling: Plain  
 Flooring: Grey Vinyl  
 Full Height Panoramic wall  
 Handrail: S.Steel 1 piece onto panoramic wall



③ Classic Asia

Wall: Dark Wood 4303  
 Accent: Red 3003  
 Ceiling: Plain  
 Flooring: Grey Vinyl  
 Mirror: Half Wall  
 Handrail: S.Steel 2 pieces (for 1400 wide cabin only)



### 1 Natural Europe

Wall: Warm Wood 4533  
 Accent: Green 6011  
 Ceiling: Plain  
 Flooring: Grey Carpet  
 Mirror: none  
 Handrail: S.Steel 2 pieces (for 1400 wide cabin only)



### 2 Natural Americas

Wall: Texture 4485  
 Accent: Dark Grey 7012  
 Ceiling: Plain  
 Flooring: Sand Carpet  
 Mirror: none  
 Handrail: S.Steel 2 pieces (for 1400 wide cabin only)



### 3 Natural Asia

Wall: Bright Wood 4367  
 Accent: Green 6011  
 Ceiling: Plain  
 Flooring: Grey Carpet  
 Mirror: none  
 Handrail: S.Steel 2 pieces (for 1400 wide cabin only)



### 1 Modern International

Wall: Texture 868  
 Accent: Steel Mirror  
 Ceiling: Plain  
 Flooring: White Stone  
 Mirror: none  
 Handrail: S.Steel 2 pieces (for 1400 wide cabin only)



### 2 Natural International

Wall: Concrete 585  
 Accent: Dark Grey 7012  
 Ceiling: Plain  
 Flooring: White Carpet  
 Mirror: none  
 Handrail: S.Steel 2 pieces (for 1400 wide cabin only)



### 3 Classic International

Wall: Concrete 1117  
 Accent: Steel Gold  
 Ceiling: Plain  
 Flooring: Sand Stone  
 Mirror: none  
 Handrail: S.Steel 2 pieces (for 1400 wide cabin only)



# Flow X

## Freedom and active living

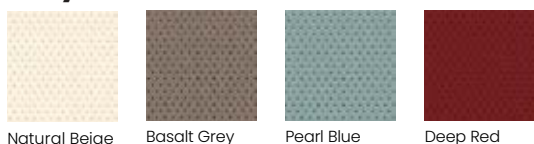
Flow X stair-lift fits most staircases, straight, around corners or even spiral on either side of the staircase. Whether you're going up or down, you'll always experience a very smooth and safe ride with Flow X Stair lift. This compact stair-lift looks simple on the outside but the technology on the inside is extremely ingenious. Patented unique ASL (ADVANCED SWIVEL AND LEVELLING) Flow X is designed for seamless movement, the flow X Provides outstanding levels of comfort, Confidence and Craftsmanship. Our most space-conscious stair-lift, Flow X is designed to blend into your home effortlessly. Flow X is fitted onto your staircase and not your wall, allowing it to be installed quickly and efficiently, with minimum disruption to your home.

The Flow X Stairlift has achieved many prestigious industry awards for design and innovation and is the number 1 stairlift in terms of quality and value for money.

- Reclined Height adjustable seat and footrest
- One handed seatbelt and wrap around armrests
- Fitted on staircase as narrow as 610mm
- Patented swivel technology
- Upholstery collections
- Quick and efficient Installation.



### Vinyl



### Fabric



### Leather



### Wood



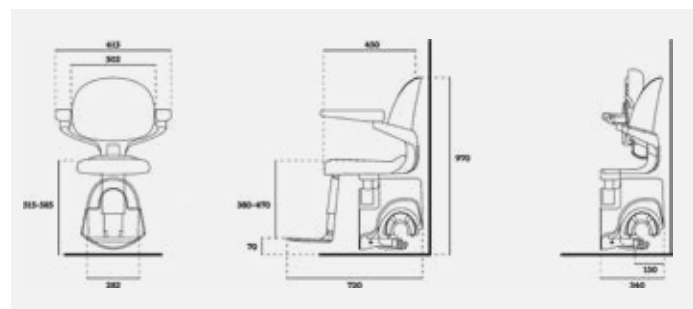
Thanks to proven monorail concept and patented ASL Technology the Flow rotates to the most optimal and safe position during the ride.



When the lift is folded up, there is still plenty of space for other stair users.



Different vertical start options enables installations even closer to doors.



Where not directly specified, measurements are in millimeters.



STRAIGHT



CURVED



OPEN



ERGONOMIC SEATBELT



With a comfortable soft touch grip, the integrated joystick is designed for you to fold away neatly in the armrest when not in use.

## SPECIFICATION

Speed Max	0.1 m/s
Drive Type	Rack and pinion
Motor Wattage	350 W
Weight Capacity	125 kg (275 lbs)
Automatic Stop	Yes
Staircase Incline	Up to 72°
Operation	Armrest detection and foldable
Joystick	Control as standard
Batteries	2 x 12V batteries, total 24V
Certification	Machinery Directive 2 006/42/ ECEN 81-40
Model Code	RP00-CU
Footrest	Available in 2 sizes - Adjustable to 5 positions
Seat Height	Adjustable to 4 positions 515 - 585mm (floor to top of seat)



Stay connected with friends and family with up to three different telephone numbers contactable directly from your stairlift.





**ALL INDIA CONTACT:**

+91 93 6161 3131  
+91 93 4433 0000

— **OUR PRESENCE IN INDIA** —

**BANGALORE SHOWROOM**

G101, No 30, Prestige Meridian-2, MG Road,  
Bengaluru, Bengaluru Rural,  
Karnataka - 560001

**CHENNAI SHOWROOM**

Nibav Building,  
2<sup>nd</sup> Floor No 11, L B Road,  
Adyar, Chennai – 600 020.

**DELHI SHOWROOM**

H-88 Kirti nagar,  
New Delhi - 110 015.

**HYDERABAD SHOWROOM**

RMK Plaza, Rd Number 12, Banjara Hills,  
Hyderabad, Telangana - 500034

— **OUR INTERNATIONAL PRESENCE** —

**AUSTRALIA SHOWROOM**

Elite Elevators Corporation Pty Ltd  
Ground Floor West, 65 Southbank Boulevard,  
Southbank, VIC 3006, Australia  
[www.EliteElevators.com.au](http://www.EliteElevators.com.au)

**MALAYSIA SHOWROOM**

Elite Elevators SDN BHD  
G-13, Residensi Fera, No 47, Jalan 34/26,  
Wangsa Maju, 53300 Kuala Lumpur  
[www.EliteElevators.my](http://www.EliteElevators.my)

**UAE OFFICE**

Ultra Elite Lifts & Escalators Contracting LLC  
Office no 2510, 25th floor,  
The Citadel Tower, Business Bay, Dubai.  
[www.EliteElevators.ae](http://www.EliteElevators.ae)

**elite**<sup>®</sup>  
**ELEVATORS**  
— The Real Home Lifts —

**TKE**

Email: [info@eliteelevators.com](mailto:info@eliteelevators.com),  
[www.EliteElevators.com](http://www.EliteElevators.com)